

ORIENTATION DISC

Many lookouts on hilltops and exposed buildings have been equipped with simple observation discs partly dating back to 19th century times. They are set up to explain near and far locations to the visitors. Their design is normally very similar, displaying a circular brass sheet that carries radial engravings of lines and text. Every line points towards a particular location in the surroundings, which can be identified by, in a way, taking a bearing over the center of the orientation disc. Mostly name, distance or elevation of a location are given.

We have improved this old instrument now substantially by adding a miniature visualization of the surrounding landscape in form of a small solid terrain model. Note that this relief model is not only a somewhat artistic approximation of the geographical reality. In fact it is based on high-precision digital elevation models of the earth surface that have been processed to run a state-of-the-art cnc-milling machine. The resulting

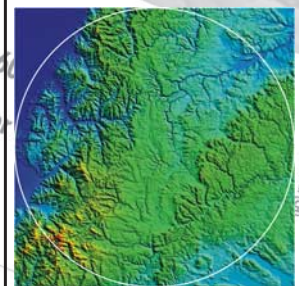
very much detailed base model is then reproduced as a very robust cast-bronze object.

The surface of this little terrain model can be further designed for example by highlighting particular locations, placing text or symbols, or adding texture or color if needed. All these additions are absolutely solid since they are part of the metal cast-bronze body. All other locations beyond the area covered by the terrain model can be placed on a stainless-steel rim of the installation in the traditional manner of classical orientation discs, line and text.

This innovative combination of a traditional orientation disc and a high-precision cnc-milled solid terrain model tremendously expands the view on a given landscape, close by and even beyond the visible horizon. At an elevated lookout the landscape now is not only at your feet, it even will be served on a platter, en miniature...

Kohrhardsberg 1159m

Brend 1149m



▲ Eiger 3572m (CH)
▲ Mönch 1070m (CH)
▲ Jungfrau 4158m (CH)
▲ Aarhorn 4276m (CH)

Reference

Lookout at St.Christophorus Chapel near Dunningen (Black Forest) displaying large parts of south-west Germany.